

A Guide to Outings

WITH TIGERS CHILDCARE



FOR EXISTING & INCOMING COLLEAGUES

Outdoors | Exploration
Curriculum and Planning | Community Involvement |
Parental Involvement

Issue.1

2022

INTRODUCTION



Tigers Childcare is committed to supporting each child's health, welfare, development, and well-being. Weekly and regular, weekly outings provide varied, meaningful, and interesting learning experiences for children.



Why?

Exploring Nature

Nurturing Children's Sense of Exploration & Curiosity



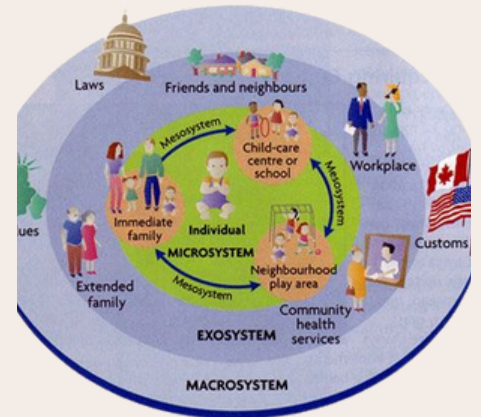
"The specific features & stimulus of the outdoor environment can hardly ever be replicated indoors" - Bento and Dias (2017)

The outdoors can be described as an open and constantly changing environment. In the outdoors, it is possible to experience freedom, gross and boisterous movements and contact with natural elements. All of which work together to encourage children's sense of exploration and curiosity.

Types of Outings

Community 1

These outings are carried out on foot or in buggies and are within walking distance of the service.



Children come to Tigers every day telling stories of their experiences with family and friends in their local community. Outings enable colleagues to respond to these stories by bringing children into the community.

Long Distance 2

These outings require transport to bring the children further a field to explore the world further



Long distance outings will promote children's sense of curiosity further as they get to explore outside of their locality and discover the world beyond our Tigers centres.



Safety, Procedures & Practice

Outings will only occur after careful planning and risk assessments take place. for children. Your curriculum and planning should be carefully thought out with the children's emerging interests at the centre.

PROCEDURES ON
OUTINGS

<p style="text-align: center;">Supervision</p> <p style="text-align: center;">1</p> <p>Constant and careful supervision by both sight and sound will occur on outings to ensure children's safety. Adequate adult:child ratio will be in place to allow for sufficient supervision of children at all times. Ongoing head counts and roll - calls will occur. Increased supervision will be implemented as required.</p> 	<p style="text-align: center;">Child Protection & Insurance</p> <p style="text-align: center;">2</p> <p>Parents attending outings will be referred to our Child Protection policy to read and become familiar with our child protection processes while present with children on outings. Any service engaging in outings will have suitable insurance in place to do so.</p> 	<p style="text-align: center;">Risk Assessments</p> <p style="text-align: center;">3</p> <p>In depth risk assessments are carried out prior to each community and long distance outing. Colleagues must carefully consider the adult:child ratio, medical needs of the children, and if all venues are safe and accessible to all children.</p> 
--	--	---

Outings will be planned in line with the centre manager both verbally and in writing. . At least one FAR trained colleague will be present on site and a number of risk assessments will be carried out prior to each outing. Where parents attend outings, no garda vetting is required but parents are asked to familiarise themselves with our child protection policy. Parents will attend in a supportive capacity and will not be left alone with the children at any point. Our colleagues prioritise each individual child's health and welfare while engaging in outings.



What you need to know...

Outings promote children's sense of identity & belonging as they use their own community and surroundings to make sense of the world around them.



Educators and children will engage in daily to weekly outings within the service.

Local community outings require parents to grant a general permission for children to attend on a regular basis. While you may not have to notify the parents in advance of a local walk, you will update them through daily and weekly communications via Childpaths and weekly newsletters

Detailed information on long distance outings will be communicated to parents in advance and a separate written permission will be required for these trips.

Outings Meet Emergent Based Curriculum...

“Outings promote children’s identity and belonging acting as a bridge between community life and life in Tigers..”

Colleagues are encouraged to respond to children's stories by bringing children on outings into the community. It is imperative that all colleagues understand the importance of well planned, assessed, and practiced outings. Below are some examples of how colleagues can create meaningful learning experiences through outings.



"Jessie loves to bake!"

Colleagues will use **community based** outings to support Jessie's interest in baking by planning an outing to the shop to buy ingredients for a recipe that Jessie and her friends will decide on together.

"Joshua loves the zoo!"

Colleagues will use **long distance** outings to support Joshua's interest through planning an outing to the zoo.

This will require a little more preparation than a community based outing – but it will be worth every second!





Ways to expand on these interests...

"Jessie loves to bake!"

- Discuss different recipe ideas with the children, asking what ingredients they might need.
- Begin discussions around how the children think you will get to the shop. Ask them to think about shops they already know and where they are.
- Make maps with the children and document their words on their page to direct you to the shop.
- Discuss what items you might need for your shop visit (ie. shopping bags, money, a list)
- Encourage the children to locate these items themselves in the shop.
- Count up the money together.
- Pack the bags...



Key Learning Experiences

- Communication
- Planning
- Directions, road safety, problem solving
- Numeracy skills
- Memory recall
- Independence



Ways to expand on these interests...

"Joshua loves the Zoo!"

- Discuss different animals that we have in Ireland. Expand on this interest to an international perspective.
- Ask the children about where we might find different animals.
- Research Dublin Zoo with the children. Encourage them to ask questions.
- Make a plan to visit the zoo, include the children in the planning such as finding transport, how long they will need, and how long it might take to get there.
- Add in a photo hunt or animal hunt list for them to bring along and tick off as they explore the Zoo.



Key Learning Experiences

- Communication
- Planning
- Directions, road safety, problem solving
- Memory recall / Recognition
- Independence



Curriculum & Planning

Outings can create meaningful and purposeful learning experience's for children. Your curriculum and planning should be carefully thought out with the children's emerging interests at the centre.



Curriculum...

Using your curriculum to reflect children's interests on a daily to weekly basis is an imperative tool in creating meaningful learning experiences for the children in your care. With careful planning and consideration, outings should play a significant role in the documentation, implementation, and extension on children's interests.

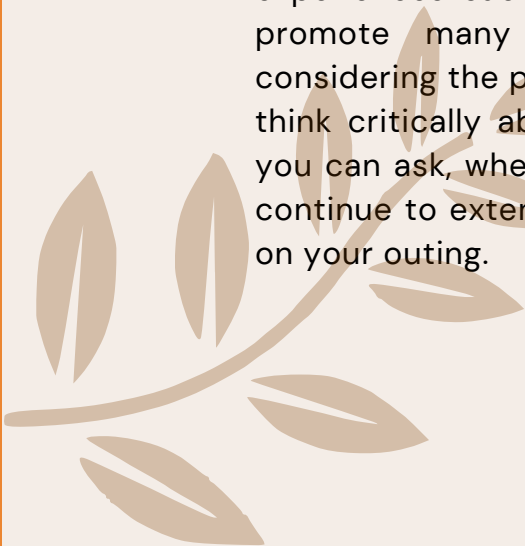
Scaffolding children's learning through hands on experiences such as outdoor exploration on outings will promote many areas of their development. When considering the purpose of your outing (eg. bird watching), think critically about what you will need, what questions you can ask, where you will go and why, and how you can continue to extend on children's interests as they emerge on your outing.



Planning...

Using your curriculum to reflect children's interests on a daily to weekly basis is an imperative tool in creating meaningful learning experiences for the children in your care. With careful planning and consideration, outings should play a significant role in the documentation, implementation, and extension on children's interests.

Scaffolding children's learning through hands on experiences such as outdoor exploration on outings will promote many areas of their development. When considering the purpose of your outing (eg. bird watching), think critically about what you will need, what questions you can ask, where you will go and why, and how you can continue to extend on children's interests as they emerge on your outing.





Partnership with Parents

To build positive relationships between colleagues and parents, we invite all parents to come and take part on both community based & long distance outings. Here is all you need to know...

As a Valued Parent

Join Us on Our Adventures!

What you need to know...

Parent/guardian involvement is encouraged and welcomed for both types of outings. Colleagues will invite parents to join on outings via child paths or at collection/drop off.

We would ask any parent considering joining their child on an outing to familiarise themselves with our outings policy.

Tap into parents occupations and hobbies and invite them to come on outings and involve children in their



CLOTHING



You know what they say?...

“There's no such thing as bad weather – simply bad clothing...”

Clothing Requirements...

Children will be regularly going on local community outings. Parents are requested to continually consider the weather and dress the child accordingly each day, including appropriate footwear:

- For outings during the summer months, sun cream is required for outings and also protective clothing including sun hats.
- For outings during the winter, children are advised to wear warm clothes including coats, hats and gloves.
- For rainy days, the use of wet gear/overalls and wellie boots are required.
- Parents must ensure that their child has a spare change of clothes each day
- Colleagues should find areas to store wet gear and welly boots within the service during the wet and wintery months.



Time to Start Exploring...

Outdoor play is one of the greatest gifts we can give our children..

Our Promise

Here in Tigers Childcare, we believe that children learn best through child led, hands on experiences. Outings play a huge role in promoting these experiences and will support each and every child that comes through our doors in developing their sense of curiosity, exploration, and self-discovery.



Please remember to reach out to the QCS Team for any support you may require in familiarising yourself and your colleagues with outings.

